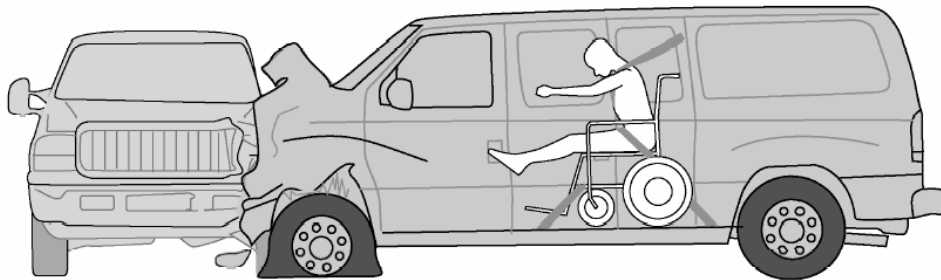


# WANTED

## Notification of crashes involving wheelchair-seated occupants



Call Jamie at 734-647-2940 or [jlmoore@umich.edu](mailto:jlmoore@umich.edu)

We need your help. Please call us at the above number if you know about a crash involving a driver or passenger who was seated in a wheelchair. We also want to hear about other problems, like a wheelchair tipping over in a van or bus. We want to investigate these events to learn how wheelchair tiedowns and seatbelts are being used and how well they work in real accidents. The information from our study will help make travel safer for people seated in wheelchairs. You must volunteer for our study and sign a form stating that you have agreed to participate. All information that we collect is recorded in a way so that people, accident locations, or products can't be identified.

**THE UNIVERSITY OF MICHIGAN  
TRANSPORTATION RESEARCH INSTITUTE  
(UMTRI)**